

(agora)[®]



3D
COLLECTION



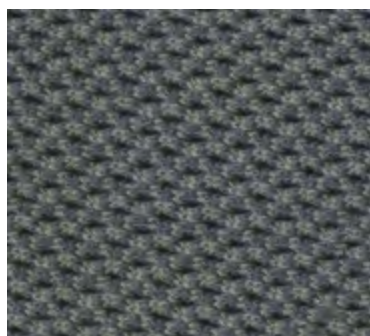
Agora 3D NATURAL
1360



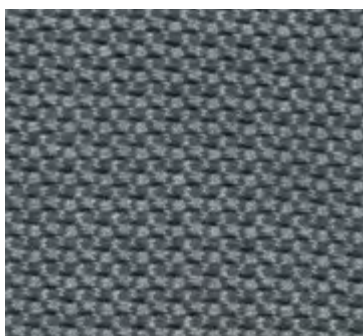
Agora 3D SAND
1361



Agora 3D MINERAL
1366



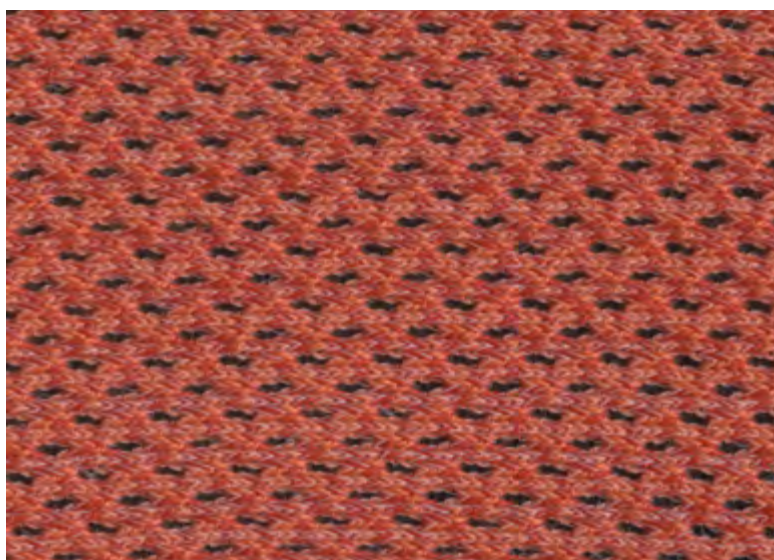
Agora 3D ASH
1365



Agora 3D SMOKE
1364



Agora 3D PACIFIC
1362

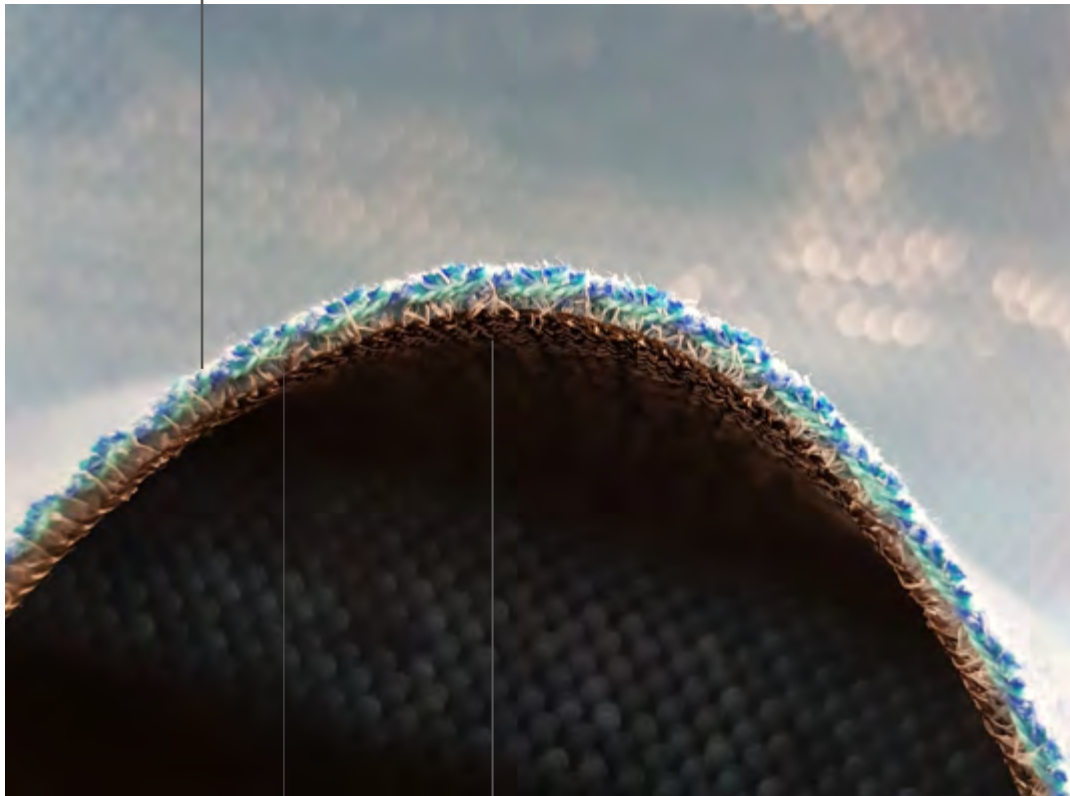


Agora 3D SCARLETT
1363

Agora 3D is used mainly on outdoor upholstery, soft furnishings and interior decoration with a "Tech" look.
Agora 3D se aplica fundamentalmente a la tapicería de exteriores, cojines y decoración de interior para darles un estilo "Tech"

Upper layer: Solution Dyed Acrylic fiber
It protects the article from the elements and solar radiation.

Cara superior: fibra acrílica tintada en masa.
Protege el artículo de la intemperie y radiaciones solares.


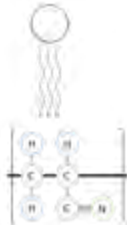












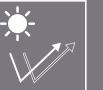




Inner face: Polyester – dimensional stability.
Cara interior: Poliéster – estabilidad dimensional.

Interlining: provides thickness, recovery power and breathability.
Interlining: proporciona espesor, poder de recuperación y transpirabilidad.

Agora 3D consists of two independent faces of fabric, joined by a net of yarns, which link both sides of fabric to form a single structure and achieve volume.

Agora 3D se compone de dos caras independientes de tejido, unidas por una red de hilado, que ligan ambas caras de tejido para conformar una única estructura y conseguir volumen.

TECHNICAL FILE CARACTERISTICAS GENERALES	Agora 3D
Composition / Composición	70% Solution Dyed Acrylic  30% Polyester
Width / Ancho	190 cm / 75"
Weight / Peso	500 gr / m ²
Thickness / Espesor	2.8 mm
Length of rolls / Longitud de las piezas	30 ml
Finish Acabado	Water repellent with stain resistant treatment Hidrófugo con tratamiento antimanchas
Light fastness / Solidez a la luz	7 / 8
Fiber structure (upper layer) Estructura de fibra (cara superior)	 <p>The strong link between the carbon is not destroyed, so the color does not change with the passage of time. El fuerte vínculo entre el carbono no se destruye, por lo que el color no cambia con el paso del tiempo.</p> 
Warranty / Garantía	5 years* / 5 años**
Tolerance Tolerancia	Sensitive values of tolerance of + / - 5% Valores susceptibles de tolerancia de + / - 5%
Cleaning instructions / Manutención	    
Application / Aplicaciones	

 WATER RESISTANT
  STAIN RESISTANT
  MOLD RESISTANT
  UV PROTECT
  UV RESISTANT
  DURABLE STRONG
  NO CONDUCTOR
  EASY TO CLEAN
  BLEACH friendly

5 YEARS WARRANTY (*) The Agora warranty covers the fabric becoming unserviceable as a result of loss of colour or strength from normal exposure conditions, including sunlight, mildew, rot and atmospheric chemical, if the fabric has been properly installed, utilized and maintained. The warranty does not cover labour and installation supplied by the dealer. The warranty also does not apply against deterioration of any kind due to abusive use, accidental burns, negligence or perforations.

(**) La garantía Agora cubre un anormal deterioro de la fibra debido a la pérdida de color o resistencia siempre que existan unas condiciones de exposición normales, incluyendo el sol, moho, putrefacción y agentes atmosféricos en general, siempre y cuando la fibra haya sido instalada, utilizada y mantenida correctamente. La garantía no cubre los trabajos de instalación del distribuidor. La garantía tampoco cubre, en cualquier caso, el deterioro debido al uso abusivo, quemaduras accidentales, negligencia o perforación.

