

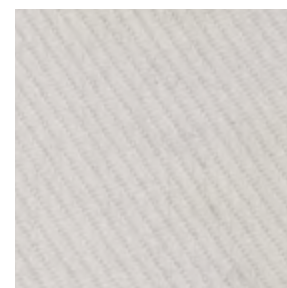
AGORA SH TWITELL  
ERY SH3964



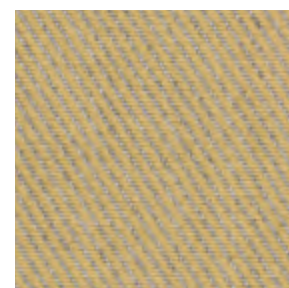
AGORA SH TWITELL  
URUCU SH3963



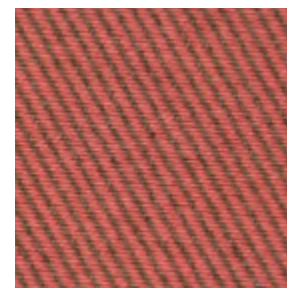
AGORA SH TWITELL  
SACHA SH3961



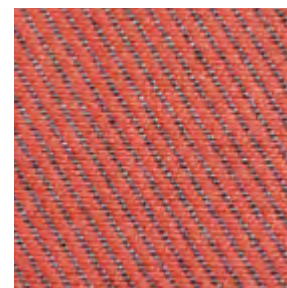
AGORA SH TWITELL  
JAZMIN SH3960



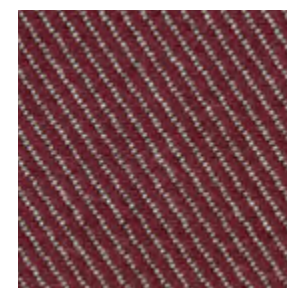
AGORA SH TWITELL  
CURCUMA SH3965



AGORA SH TWITELL  
HIBISCUS SH3967



AGORA SH TWITELL  
FLAMBO SH3965



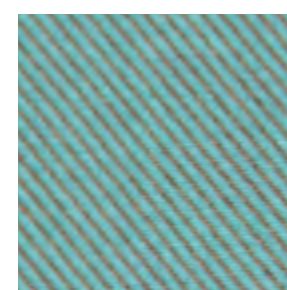
AGORA SH TWITELL  
CROTO SH3969



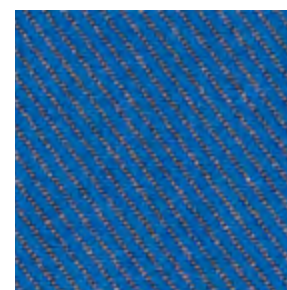
AGORA SH TWITELL  
MIRTO SH3972



AGORA SH TWITELL  
MONTEVERDE SH3974



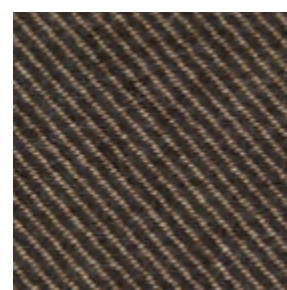
AGORA SH TWITELL  
TOE SH3973



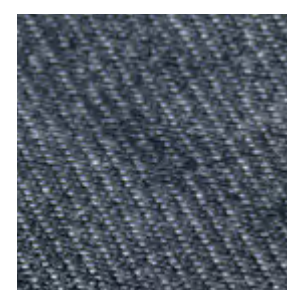
AGORA SH TWITELL  
LUDO SH3975



AGORA SH TWITELL  
BORA SH3962



AGORA SH TWITELL  
AKA SH3977



AGORA SH TWITELL  
IO SH3978

**Composition / Composición**

100% Solution Dyed Acrylic

**Width / Ancho**

160cm

**Weight / Peso**

300gm/m<sup>2</sup>

**Length of rolls / Longitud de las piezas**

50ml

**Finish / Acabado**

Water repellent, antistain treatment, Safe Home™ finish

**Colour fastness to rubbing / Solidez a las tinturas al frote**

4-5/5

**Colour fastness to chlorinated water / Solidez a las tinturas al agua clorada**

5/5

**Determination of the tear resistance / Resistencia al desgarro**

Warp / Urdimbre 130 N

Weft / Trama 130 N

**Breaking Strength / Resistencia a la rotura**

Warp / Urdimbre 1800 N

Weft / Trama 1100 N

**Resistance to pilling / Resistencia al pilling**

4-5/5

**Spray test/ Test de spray**

5/5

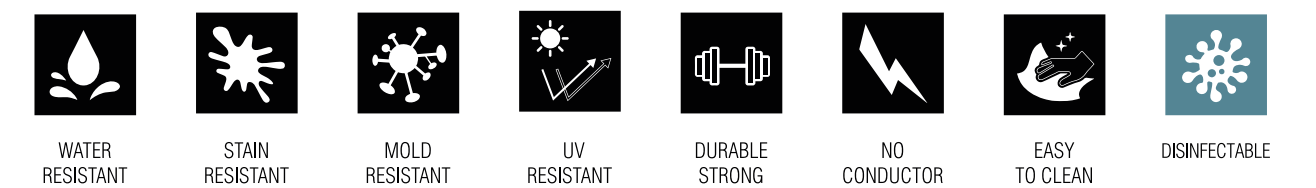
**Abrasion resistance (Martindale) / Resistencia a la abrasión (Martindale)**

35000 rubs/ciclos

**Cleaning instructions / Manutención**



**Applications / Aplicaciones**



**Qualities / Cualidades**

